

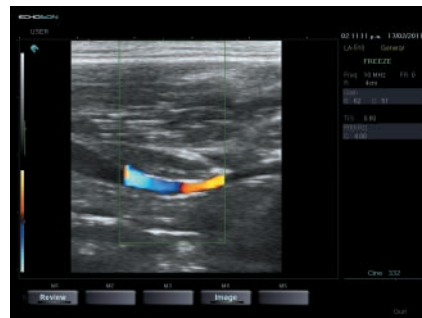
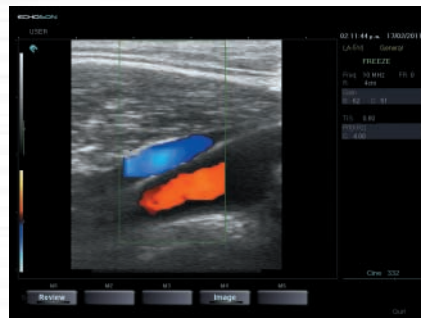
ECHOSON
EPIDOT SC
color doppler

EPIDOT SC

COLOR DOPPLER

Designed for Private Clinics, Smaller Hospitals, Emergency Departments, First Aid Units, Intensive Care Units etc.

Powerful Color and Spectral Doppler technology, high quality and high resolution of tissue visualization provide maximum productivity and diagnostic accuracy.



MAIN APPLICATIONS

- **Abdominal**
- **Musculoskeletal**
- **Vascular Imaging**

TECHNICAL SPECIFICATION

FEATURES

- 2D, B+B, 4B, Zoom, M, 2D+M
- 2D+PW (Pulse Wave Doppler)
- Color Doppler: CF (Color Flow), PF (Power Flow), 2D+CF/PF+PW

- Digital image filtering
- Harmonic imaging THV
- ESR - Enhanced Speckle Reduction
- Multi-line processing
- Automatic dynamic adjustment of the receiver frequencies and filtering
- Auto-image optimizer
- Hi-Res 15" LCD monitor
- Cineloop
- DICOM 3.0 (optional)
- Multiple data image recording options (HDD, CD/DVD, USB)
- Customized to specific diagnostic requirements

POWER SUPPLY

- Power supply: AC 100/240 V, 50/60 Hz
- Power consumption: 65 VA

DIMENSIONS AND WEIGHT

- 455 x 445 x 93 mm; 9,0 kg

MULTI-FREQUENCY PROBES



convex:
CA-255 / R60 (2,5~5,0 MHz)



convex:
CA-305 / R20 (2,5~6,0 MHz)



convex:
CA-409 / R13 (4,5~9,5 MHz)



linear:
LA-510 / L40 (5,0~12,0 MHz)



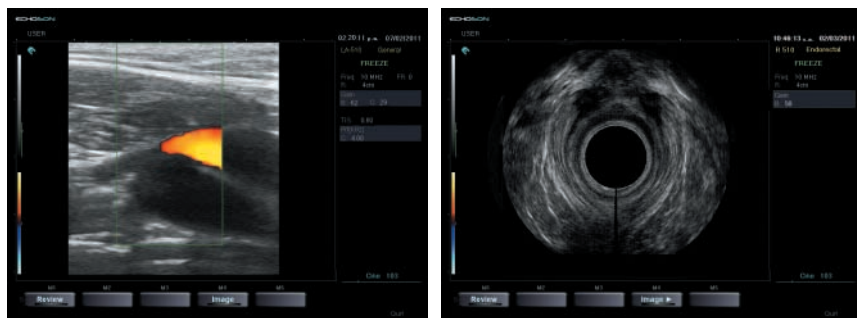
micro-convex endovaginal:
CV-580 / R13 (5,0~10,0 MHz)



anorectal 360°:
R-510 / R8 (5,0~12,0 MHz)



transrectal bi-plane:
2R-575 / R11 (5,0~7,5 MHz)





ECHOSON

ECHO-SON S.A.
POLAND; 24-100 Pulawy, ul. Krancowa 5
phone: +48 81 886 36 13; fax: +48 81 886 83 10
e-mail: export@echoson.com.pl

www.echoson.eu

ECHO-SON reserves the right to change design and specification without notice. All rights reserved.