

**ALBIT - SIMPLE & SMART** Duplex Doppler ultrasound scanner dedicated to individual applications  
 / Endovascular - monitoring of the treatment (EVLT, EVRF, sclerotherapy etc.), Regional Anesthesia, Vascular Access, Musculoskeletal, ... etc./



**SIMPLE & SMART** remote operation controller (BT)

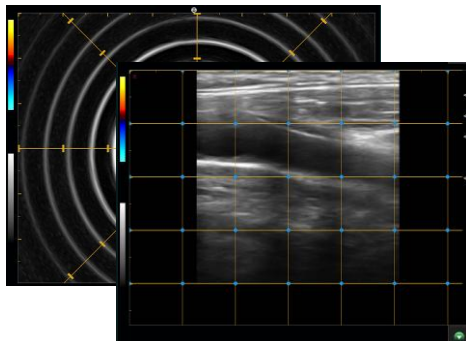
Excessively useful for monitoring of the surgical treatment. Enables remote control all menu button and adjustment of some basic and mostly used functions:

- Gain
- Depth / range of exams
- Duplex Color Doppler
- User keys
- Freeze/Run etc.



**SIMPLE & SMART** Duplex Color Doppler

Particularly useful in all vascular applications. Duplex Color Doppler (CF) and Power Doppler (PF) displayed on demand in dedicated B+B/CF mode for vascular mapping of examined and scanned regions and organs.



**SIMPLE & SMART** image grid

For rapid estimation of the location and dimension/size the organs and regions under examinations .

*Conventional measurements are available in Freeze Mode.*



**SIMPLE & SMART** adjustable roll-stand

Improves work-space conditions. Ergonomic and comfort attribute for optimal positioning of the scanner at the patient side, (bedside, operation table, standing etc.).